

Sizewell C update 2023

Theberton and Eastbridge Parish Council

Wednesday 13th December 2023

Agenda

- Meet the READ Team
- Deed of Obligation
- Community Pledges
- Associated Developments
- Project Update
- Project Tracker

**SIZEWELL C IS A PROPOSED
NEW NUCLEAR POWER STATION**
THAT WILL BE BUILT ON THE SUFFOLK COAST

IT WILL
SUPPLY
POWER TO **6** MILLION HOMES
AND GENERATE
ELECTRICITY FOR 60 YEARS



SIZEWELL C WILL PROVIDE
LOCAL JOBS, TRAINING AND EDUCATION BENEFITS

**SIZEWELL C
WILL SAVE
9** MILLION
TONNES OF CO₂
EMISSIONS EVERY
YEAR OF OPERATION

**SIZEWELL C
WILL TAKE
9-12 YEARS TO BUILD**
**SUPPORT
900** PERMANENT JOBS



Community Relations Team



Paul Lennon – Michelle Emmerson Grey
Senior Community Relations Manager for Residents and Land. Paul's team is responsible for engaging with residents and landowners regarding the project, addressing enquiries and/or any concerns they have.

Richard Knight – Zoe Botten
Senior Community Relations Manager for community governance and will engage with Parish Councils and local authorities regarding project updates and the future governance of the Deed of Obligation.

Effective Relationships



Accountability



Honesty



Listening



Open
Communication

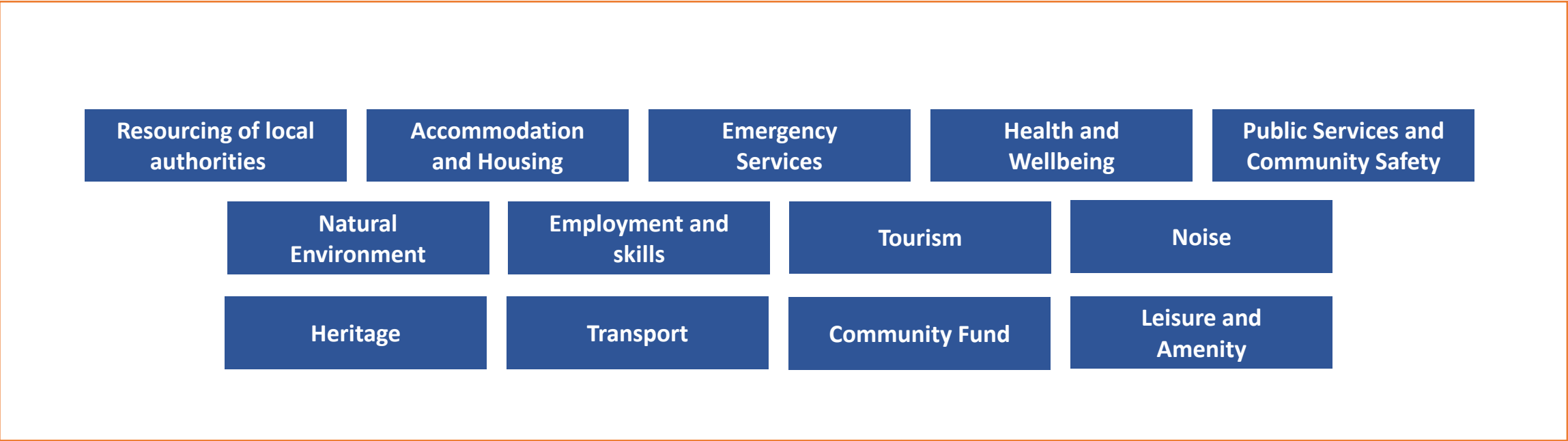


Trust



Mutual Respect

Deed of Obligation



Community Pledges

Minimize disruption to local communities during the construction of Sizewell C

Invest in local employment, education and skills. This includes an aim to enable 1,500 apprenticeships.

Support the growth of the local economy. This includes measures to support local firms in gaining work on the project.

Transport the majority of construction materials by rail and sea, significantly reducing the number of Sizewell C HGVs on local roads.

Respect the Suffolk Heritage Coast and minimise impact on RSPB Minsmere, National Trust Dunwich Heath and Leiston Abbey.

Return the temporary construction area to a standard befitting the Area of Outstanding Natural Beauty (AONB) following construction.

Remove the accommodation campus and caravan site, the park and ride sites, the rail extension of the Saxmundham to Leiston branch line and freight management facility following construction and restore the land.

Support the Suffolk coast tourism sector to offset impacts from construction through the provision of a Tourism Fund.

Provide a comprehensive 24/7 onsite occupational health service for workers, a healthcare contribution and a Public Services Contingency Fund.

Require all workers to sign a Worker Code of Conduct and enforce it – as we have done successfully at Hinkley Point C.

Enhance the economic, social and environmental wellbeing of local communities through the provision of a Community Fund.

The Sizewell C Project will not impact on the supply of water to local residents by a single drop. We have a sustainable strategy to provide potable water throughout construction and the operation of the new power station.'

Working Groups and Forums

REVIEW GROUPS

- PLANNING GROUP
- ENVIRONMENT REVIEW
- TRANSPORT REVIEW
- SOCIAL REVIEW
- ECONOMIC REVIEW

DELIVERY STEERING GROUP

WORKING GROUPS

- COMMUNICATIONS
- WATER MANAGEMENT
- MARINE TECHNICAL
- NATURAL ENVIRONMENT AWARDS
- ECOLOGY
- RIGHTS OF WAY
- LOCAL TRAFFIC
- PARISH COUNCILS COMMUNITY SAFETY
- HEALTH AND WELLBEING
- ACCOMMODATION
- TOURISM
- SUPPLY CHAIN
- EMPLOYMENT, SKILLS AND EDUCATION



MAIN DEVELOPMENT SITE FORUM

First meeting: Tuesday 16 January 2024.
Through the Main Development Site Forum, representatives from communities located in the immediate vicinity of the Main Development Site of Sizewell C can raise and discuss construction progress and key issues affecting the local community.



SOUTHERN TRANSPORT FORUM

First meeting: Monday 12 February 2024.
In this Forum, we'll focus on road and rail transport issues and opportunities with representatives from communities located in the immediate vicinity of the Southern Park and Ride Site, Freight Management Facility Site, and the Two Village Bypass Site.



NORTHERN TRANSPORT FORUM

First meeting: Tuesday 6 February 2024.
The North Transport Forum is where we'll discuss all things road and rail with representatives from communities located in the immediate vicinity of the Northern Park and Ride Site, Yoxford roundabout and other highway improvement works sites, and Sizewell Link Road.



ANNUAL COMMUNITY FORUM

First meeting: Tuesday 2 April 2024.
The annual Community Forum meeting will be open to the East Suffolk community, to hear updates on the work of the Main Development Site Forum, the Southern Transport Forum, and the Northern Transport Forum. We'll discuss key issues for local communities and ways to minimise impacts and maximise benefits to those living and working nearby.

Site Team Introductions

- David Peacop
Site Operations Director - SZC Project
- Spencer Bowdler
Site Operations – Site Lead
- Tim Newton
Site Security Manager

Off Site Infrastructure

OVERVIEW



Scan to access map

Two Village Bypass
(Farnham & Stratford St Andrew)

Southern P&R
(Wickham Market)

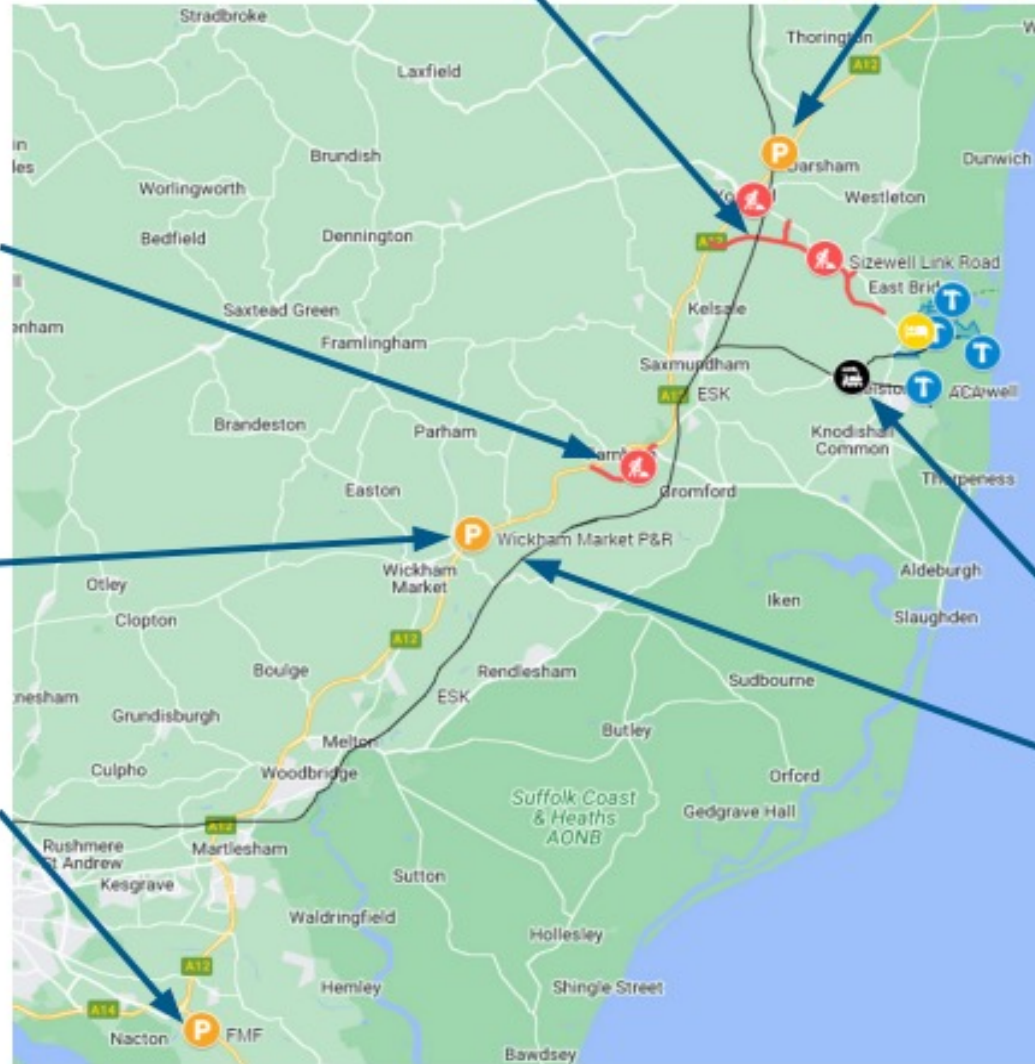
Freight Management
Facility

Sizewell Link Road

Northern P&R
(Darsham)

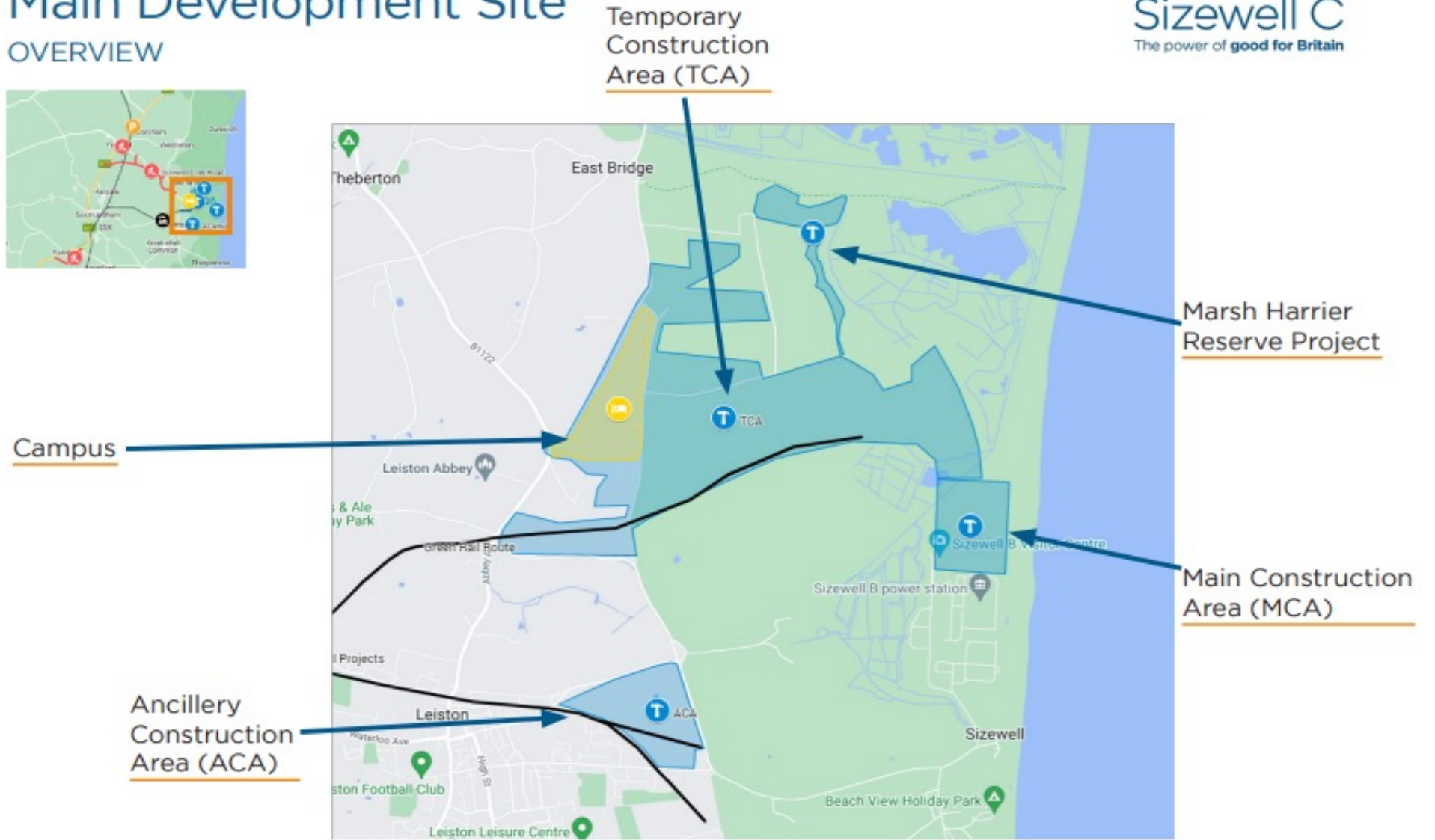
Sizewell Branch
Rail Line

East Suffolk
Rail Line



Main Development Site

OVERVIEW

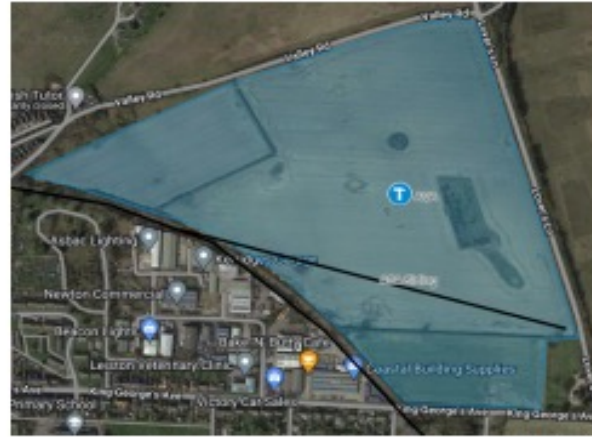


Ancillary Construction Area (ACA)

GEOGRAPHICAL



CURRENT



OPERATIONAL



KEY ASPECTS

- Rail Head
- Caravan Pitches
- Stockpiles
- Park and Ride

Temporary Construction Area (TCA)

GEOGRAPHICAL



CURRENT



OPERATIONAL



KEY ASPECTS

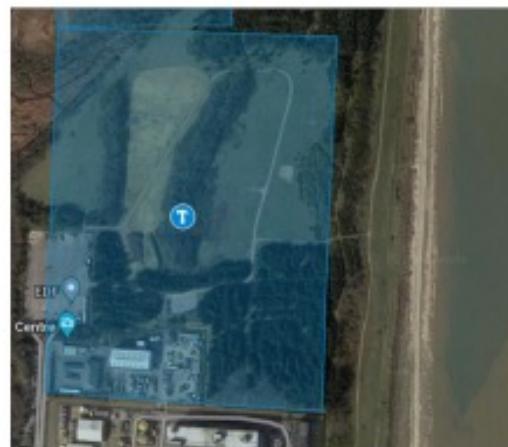
- Campus (accommodation and surrounding infrastructure)
- Rail siding
- Stockpile areas
- Haul routes to and from MDS
- Concrete batching plant
- Prefabrication facilities
- Security facilities

Main Construction Area (MCA)

GEOGRAPHICAL



CURRENT



OPERATIONAL



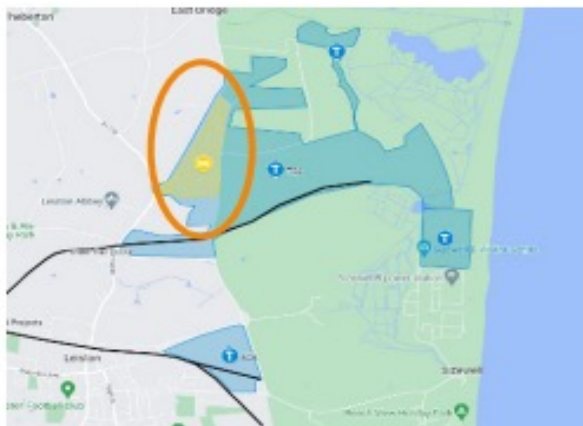
KEY ASPECTS

- Nuclear Island containing two EPR Reactors
- Produces 3.2GW of Power
- Sits alongside Sizewell A and B Power Stations

Campus

LOCATED ON THE TCA

GEOGRAPHICAL



CURRENT



OPERATIONAL



KEY ASPECTS

- Up to 2,400 beds
- Recreation building (restaurants, kitchens, gyms, prayer rooms, service rooms)
- Reception building (management space, medical facility, administration)
- Emergency equipment store for wider site
- 1,627 car parking spaces (inc EV charging)
- 120 motorcycle and 120 bicycle spaces

KEY INFORMATION

- **Project Leader:** Adam Conyers
- Land Required
- **Works Duration:** c.32 Months
- **Consultant Team:** Atkins
- Main DCO constraints:
 - » Key Precursors:
 - » Gain East Suffolk Council agreement to the submission of a statement of compliance with the 16 Campus design principles
 - » Key Successors:
 - » Upper Abbey Farm works complete before occupation
 - » 3,000 on site workers = 1,200 beds
 - » 4,800 on site workers = 2,400 beds

DRAFT

Workforce Conduct

The conduct of the SZC workforce in the community is of the highest importance. It is for that reason that everyone involved with the SZC Project is expected to:

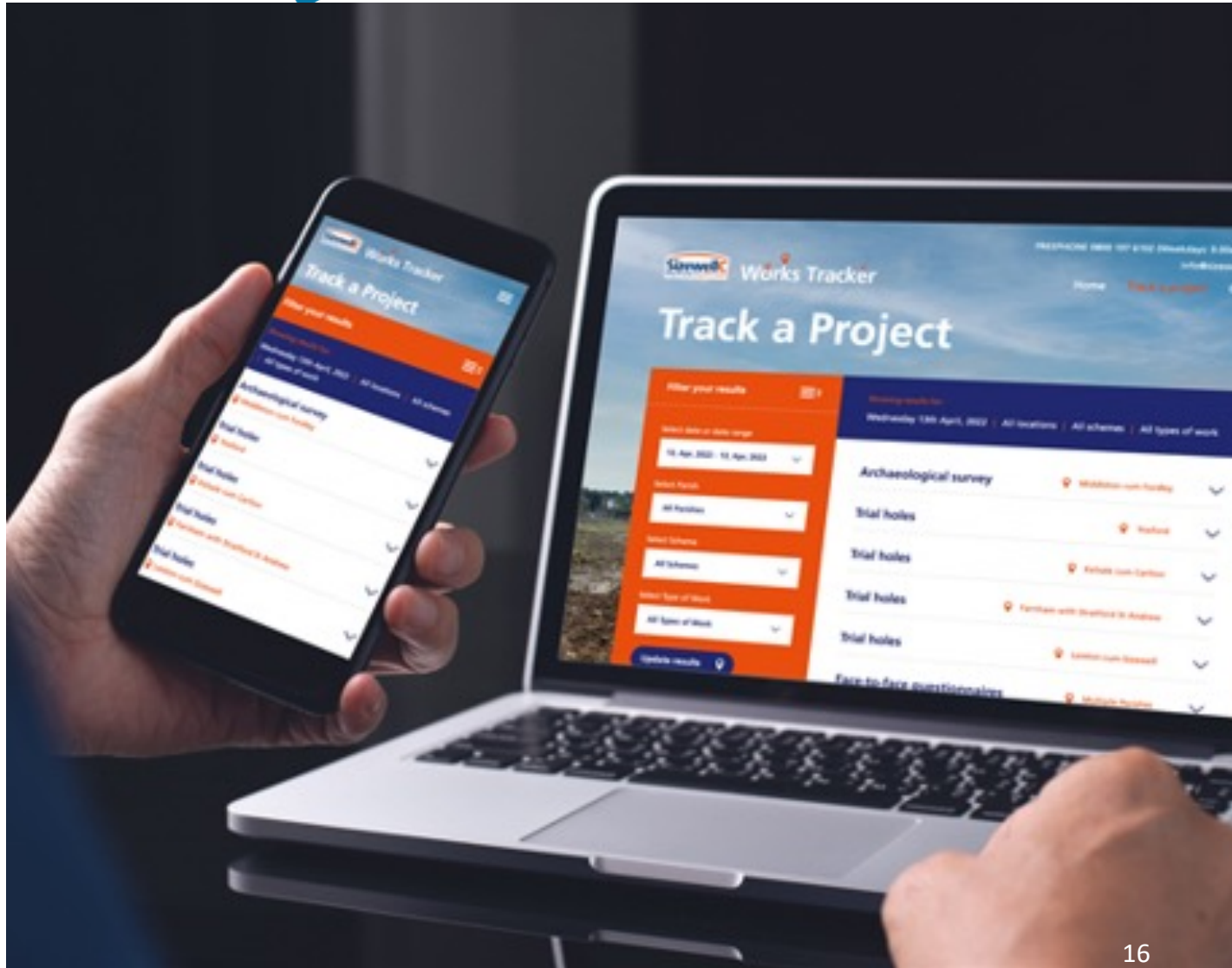
- Be responsible for your safety and the safety of others by complying with all applicable laws, rules, and regulations;
- Be ambassadors for the project through your behaviour and actions on site and in the community, including in the use of social media
- Refrain from anti-social behaviour, discriminatory behaviour or harassment on and off site
- Ensure that they are not intoxicated by alcohol or under the influence or illegal drugs
- Respect colleagues and endeavour to maintain harmonious workplace relations at all times
- Ensure that rented accommodation is maintained in a tidy state with the proper disposal of rubbish
- Ensure that personal noise levels are appropriate to the time of day and location
- Ensure no damage of any kind is caused to property on the off site
- Respect speed limits and be aware of other road users, agricultural vehicles and livestock

‘By attending and completing the SZC Site Induction and receiving access to SZC site you are confirming your commitment to the expectations described above’.

Project updates

New online works tracker to keep local communities informed about surveys and other preparatory works

Contact our Leiston office –
info@sizewellc.co.uk or 0800 197 6102



Thank you